



6 inches / 72 cells

LUXPOWER®

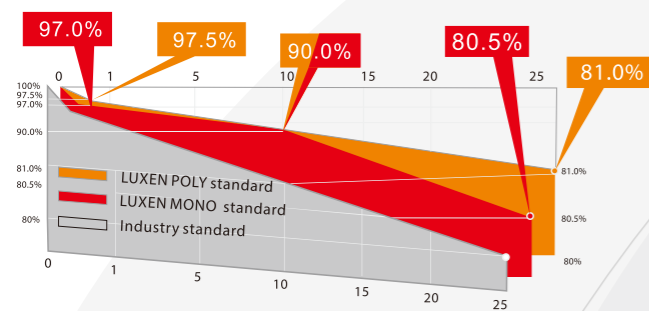
6 inches / 72 cells

Premium modules of LUXPOWER® series with varied power ratings are suitable for all types of systems, from small-scale private roof systems to large-scale solar power farms.

Insured by **PICC**

LINEAR PERFORMANCE WARRANTY

10-Year Product Warranty • 25-Year Linear Power Warranty



ISO9001:2015&ISO14001 mangarment systems

IEC61215 & IEC61730 standard quality

0-5W positive power sorting

Stable performance under weak light conditions

Wind load up to 3800Pa
Snow load up to 5400Pa

Salt mist and ammonia corrosion tests passed

10-year 25-year 25-year power warranty
10-year product warranty

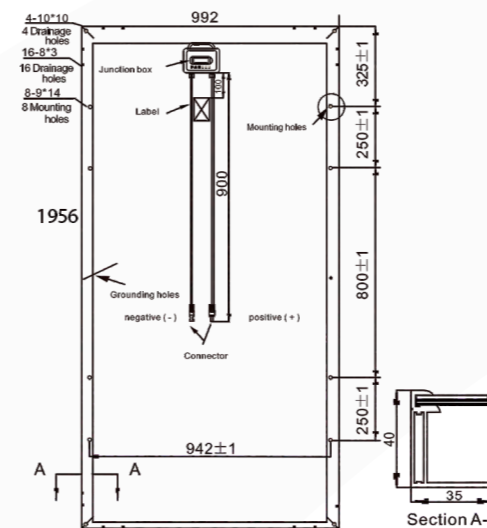


LUXEN

MONO	STC	LNSF-335M	LNSF-340M	LNSF-345M	LNSF-350M
Maximum Power (P _{max})		335W	340W	345W	350W
Open Circuit Voltage (V _{oc})		44.2V	44.4V	44.6V	45V
Short Circuit Current (I _{sc})		9.77A	9.88A	9.94A	9.99A
Voltage at Maximum Power (V _{mpp})		36.3V	36.5V	36.7V	37V
Current at Maximum Power (I _{mpp})		9.23A	9.34A	9.4A	9.46A
Module Efficiency (%)		17.26%	17.52%	17.78%	18.04%

POLY	STC	LNSF-315P	LNSF-320P	LNSF-325P	LNSF-330P
Maximum Power (P _{max})		315W	320W	325W	330W
Open Circuit Voltage (V _{oc})		45.5V	45.5V	45.7V	45.7V
Short Circuit Current (I _{sc})		9.17A	9.32A	9.39A	9.47A
Voltage at Maximum Power (V _{mpp})		36.7V	36.7V	36.9V	37.1V
Current at Maximum Power (I _{mpp})		8.58A	8.72A	8.81A	8.89A
Module Efficiency (%)		16.23%	16.49%	16.75%	17.01%

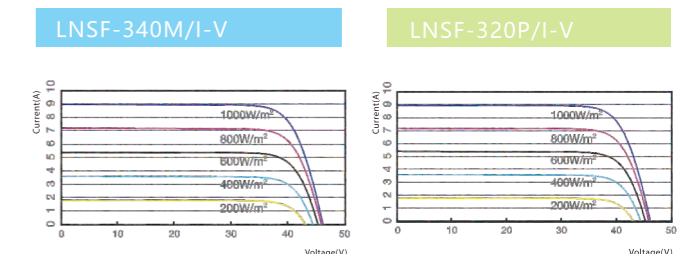
STC: Irradiance 1000W/m², module temperature 25°C, AM=1.5;
 Best in Class AAA solar simulator(IEC 60904-9) used, power measurement uncertainty is within +/-3%



Operating Module Temperature	-40°C to +85°C
Maximum System Voltage	1500V DC (IEC) 600V DC (UL)
Maximum Series Fuse Rating	15A
Power Tolerance	0/+5W
Temperature Characteristics	
Nominal Operating Cell Temperature (N _{oCT})	45±2°C
Temperature Coefficient of P _{max}	-0.40%/°C
Temperature Coefficient of V _{oc}	-0.31%/°C
Temperature Coefficient of I _{sc}	0.05%/°C

Packing Configuration		
Container	20'GP	40'GP
Pieces per pallet	26	26
Pallets per container	10	22
Pieces per container	260	572

Mechanical Characteristics	
Solar Cell	156×156mm(6 inches)
No. of Cells	72(6×12)
Dimensions	1956×992×40mm
Weight	23.0kgs
Front	Glass 3.2mm tempered glass
Frame	Anodized aluminium alloy
Junction Box	IP67/IP68 rated(3 by pass diodes)
Output Cables	4.0mm ² , symmetrical length (-)900mm and (+)900mm
Connectors	MC4 compatible
Mechanical load test	5400Pa



LUXEN